

Name: \_\_\_\_\_

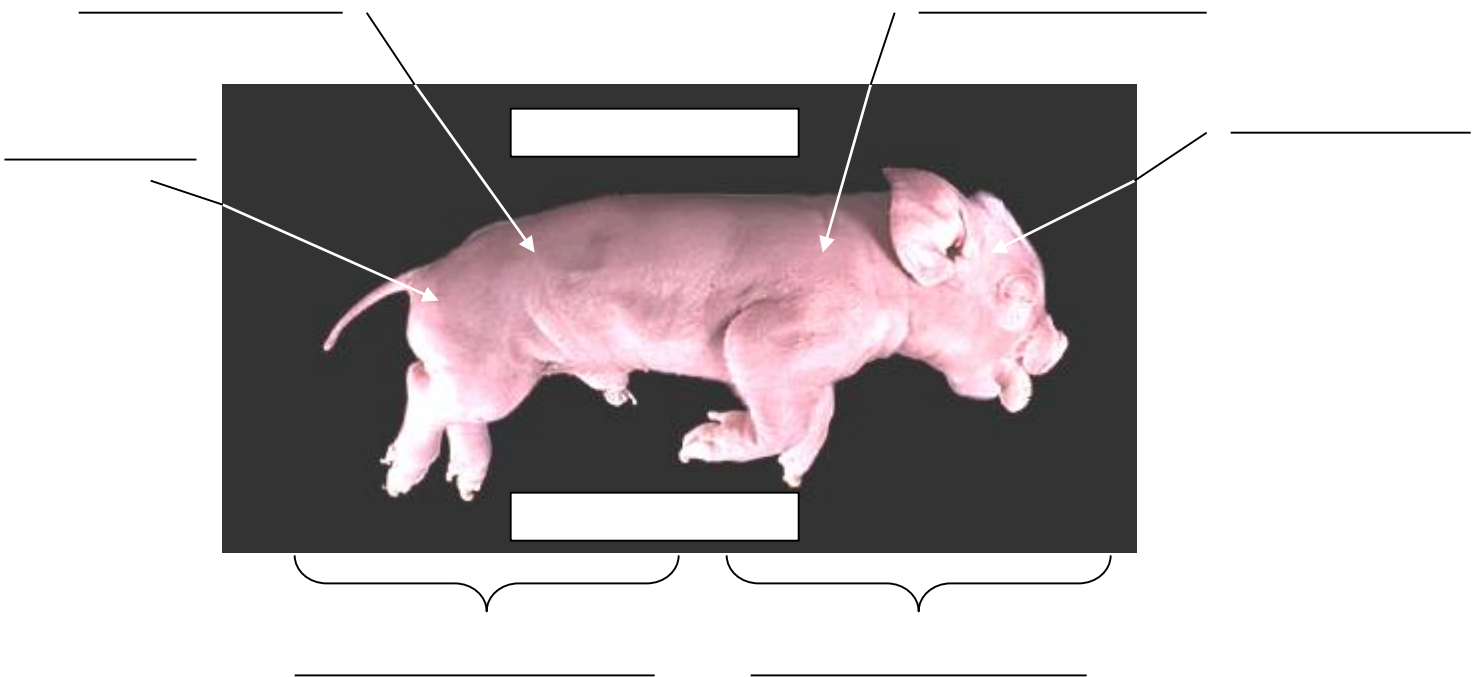
# Virtual Pig Dissection

Directions: With a partner you will begin to prepare for your upcoming dissection. In order to be fully prepared you will engage in a virtual dissection to familiarize yourself with the anatomy as well as procedures/techniques. Follow the link provided (see teacher webpage resources to access link instead of typing), and fill out this worksheet as you go through each section.

<https://www.whitman.edu/academics/departments-and-programs/biology/virtual-pig>

## Part 1: Anatomical References

Label this picture using the following terms: anterior, posterior, dorsal, ventral, caudal region, cranial region, pectoral region, pelvic region

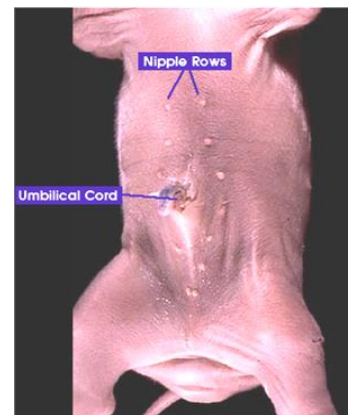
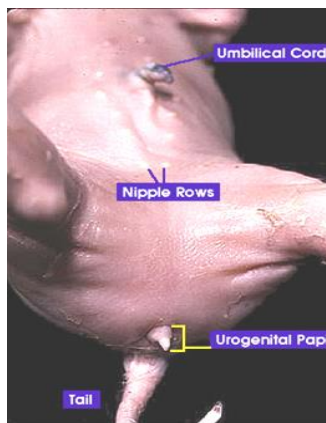


## Part 2: Sexing Your Pig

Write down two observations that tell you how you know that they are female or male, and label each diagram either male or female.

\_\_\_\_\_  
\_\_\_\_\_

Males do not have a u \_\_\_\_\_  
p \_\_\_\_\_



### Part3: Digestive System

The head:

What is visible on the tongue that interprets chemical sensations? \_\_\_\_\_

Where is the hard palate found? \_\_\_\_\_

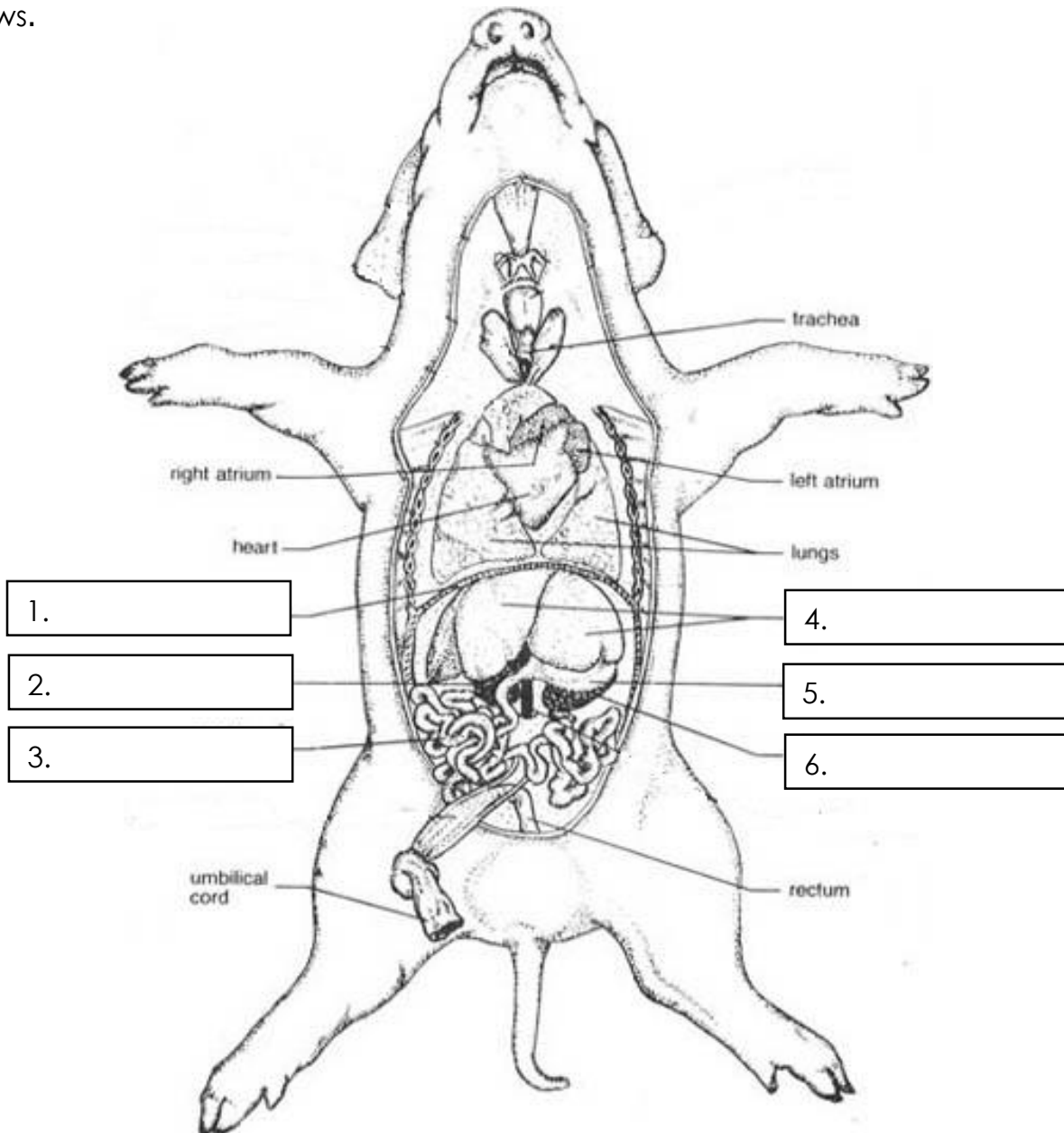
Abdomen:

Pigs are considered carnivores, herbivores, or omnivores (circle one)

How long are the intestines? \_\_\_\_\_ ft.

What is the function of rugae in the stomach? \_\_\_\_\_

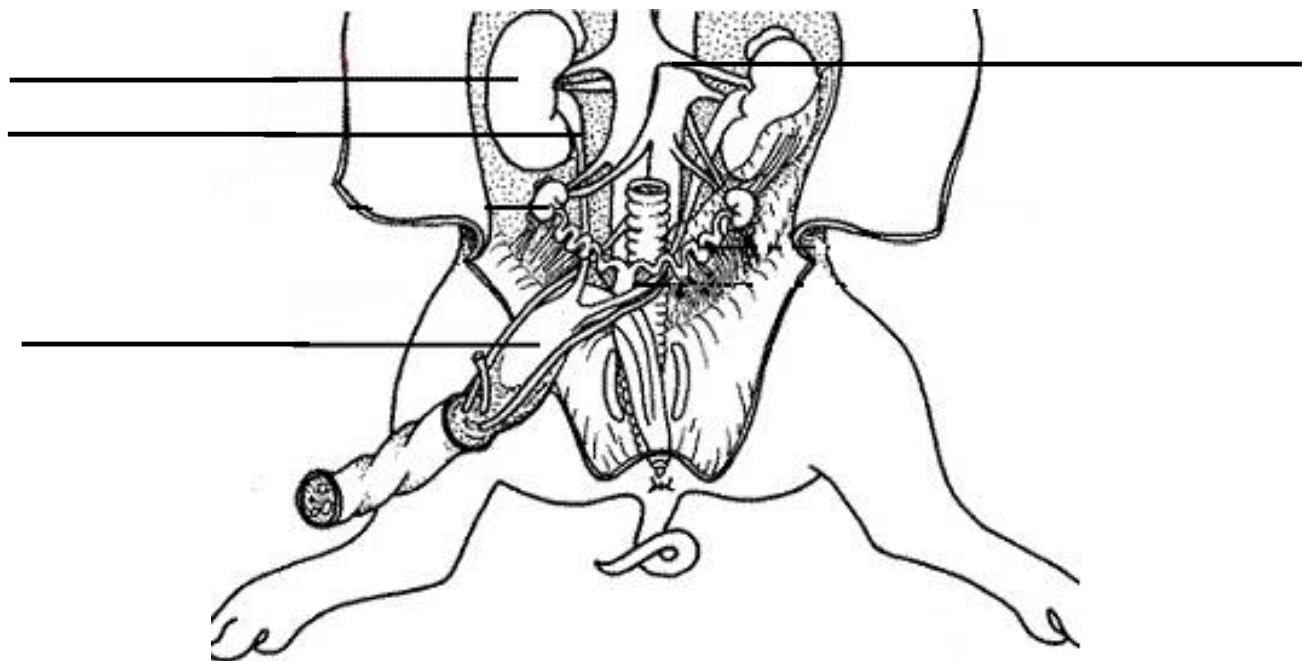
Label the parts of the picture missing below. Also write their functions in the table that follows.



Structure Number	Structure Name	Structure Function
1		
2		
3		
4		
5		
6		

#### Part 4: Excretory System

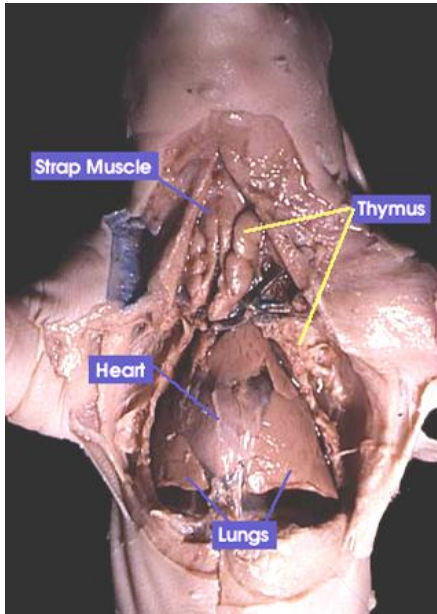
Label this picture using the following terms: *bladder*, *kidney*, *renal blood vessels*, *ureter*



Is this a male or female? How do you know?

## Part 5: Circulatory System

Show the correct order of blood flow through the heart by filling in the blanks below with the following terms: *left atrium, left ventricle, lungs, right atrium, right ventricle*



The circulatory system is responsible for the transportation of:

- 
- 
- 
- 

Homeostasis is...

Why is the thymus enlarged in the fetal pig? \_\_\_\_\_  
 \_\_\_\_\_

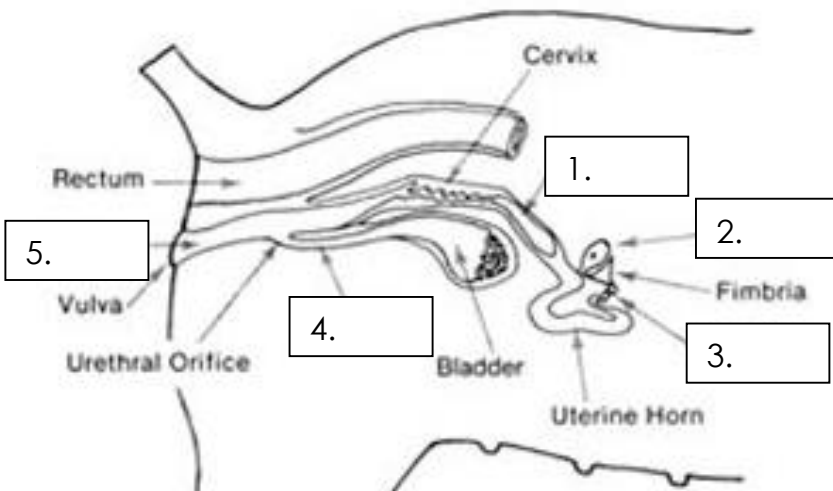
This blood vessel supplies oxygenated, nutrient-rich blood to the ventral portion of the heart c\_\_\_\_\_ a\_\_\_\_\_

The \_\_\_\_\_ is also known as the windpipe.

What does the aorta do? \_\_\_\_\_  
 \_\_\_\_\_

## Part 6: Reproductive System Label this picture with these terms: ovary, oviduct, uterus, vagina, urethra

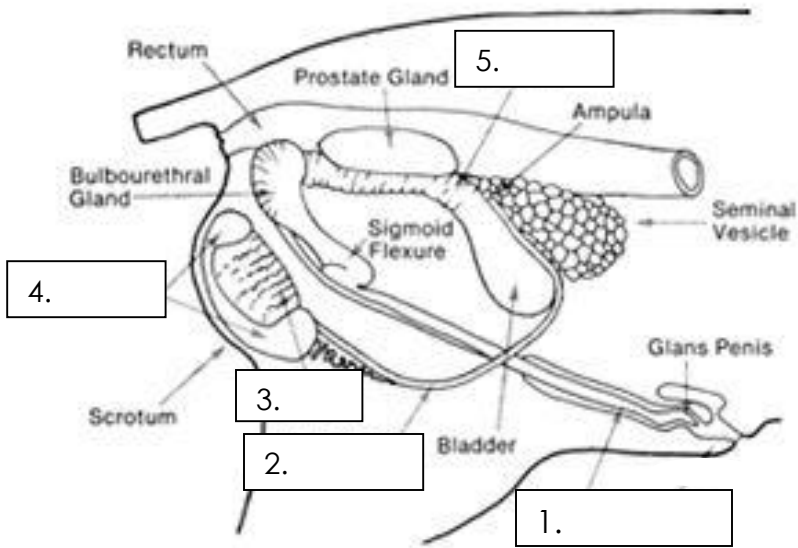
**Female**



1. \_\_\_\_\_
2. \_\_\_\_\_
3. \_\_\_\_\_
4. \_\_\_\_\_
5. \_\_\_\_\_

Label this picture with these terms: epididymis, testes, urethra, urogenital opening, vas deferens

### Male



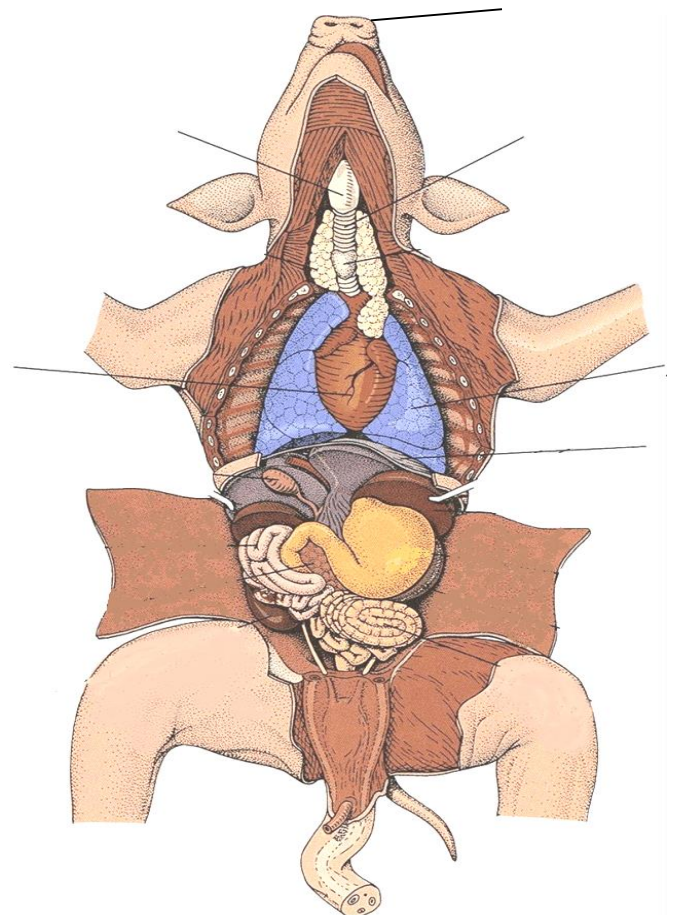
1. \_\_\_\_\_
2. \_\_\_\_\_
3. \_\_\_\_\_
4. \_\_\_\_\_
5. \_\_\_\_\_

### Part 7: Respiratory System

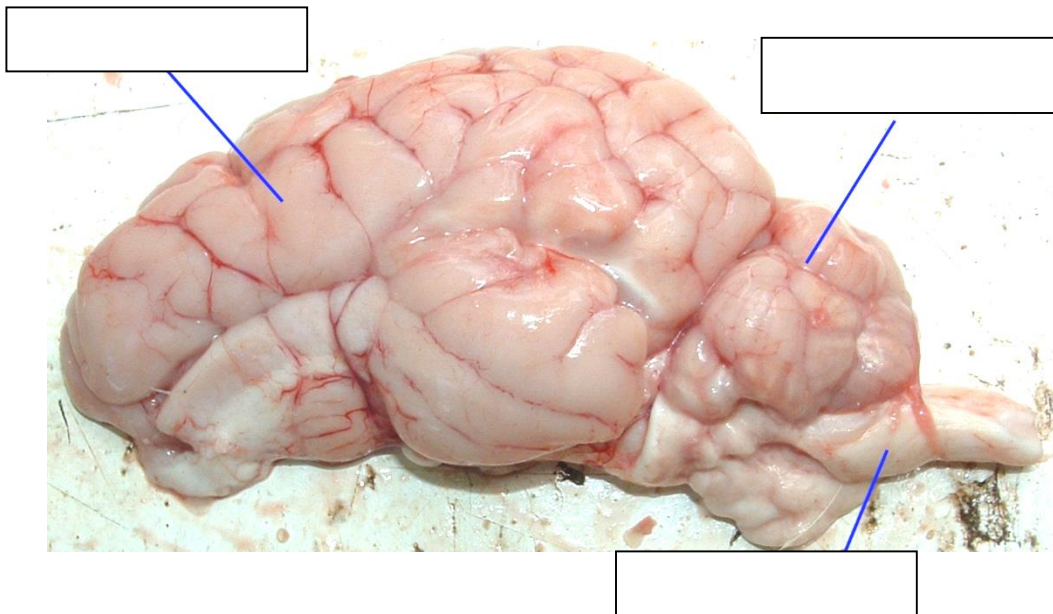
Label this picture in the table below using the following terms: bronchi (under heart), diaphragm, lungs, nares, larynx, trachea

Also write their functions in the table.

Structure Name	Structure Function



**Part 8: Nervous System** Examine the picture of the fetal pig brain. Label the following:  
*cerebellum, medulla, cerebrum*



**Important things to remember:**

Tools you may need (match to the picture):

1. Forceps (not tweezers)
2. Scalpel
3. Probe
4. Scissors
5. Gloves



Safety:

1. Follow all instructions given by your teacher.
2. Wear gloves and safety goggles
3. Handle scalpels or razor blades with extreme care
4. Absolutely NO horseplay or inappropriate behavior
5. Avoid contact with chemicals, wash skin if contact occurs
6. Keep area neat and clean up thoroughly upon completion